

# Unified Operations Centers

September 14<sup>th</sup>, 2021

Boris Muratov  
Vice-President Process Automation Cluster CIS  
Schneider Electric





# COVID-19 accelerator of **Digital**

**Remote Everything**  
**Resilience**  
**Sustainability**  
**Efficiency**

### Unmanned Operations



### Collaborative Design



### Advisor



### Augmented Reality



### Remote Unified Operation Center



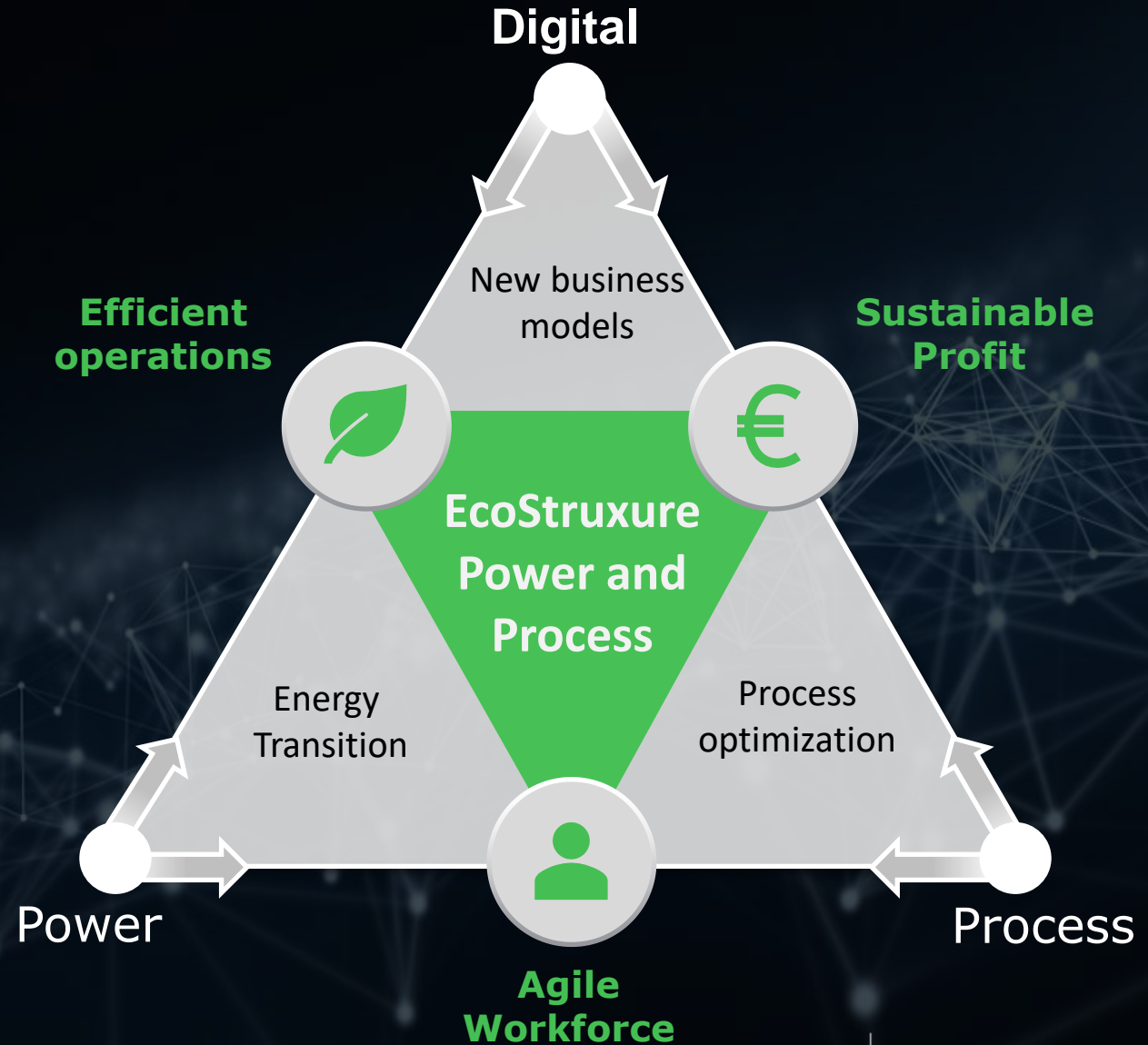
### Digital Training



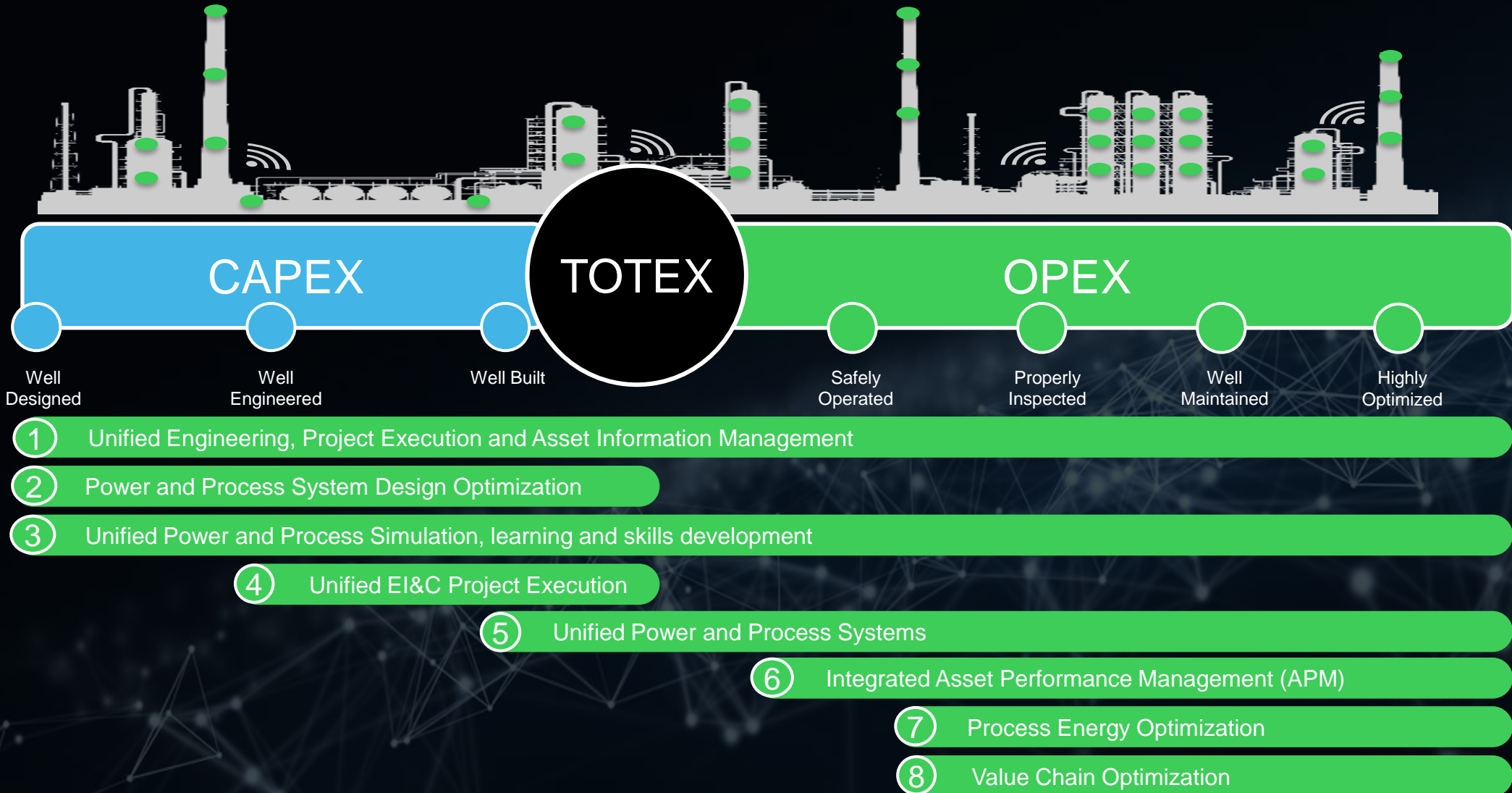
# Remote Everything



# 4X Efficiency



# EcoStruxure Power and Process





# Trends for Unified Operations Centers – Why now?







Stakeholders require the ability to rapidly study conditions and operations to make key business decisions.

How can I **monitor and control operations** better?

How do I ensure **availability and reliability of assets**?

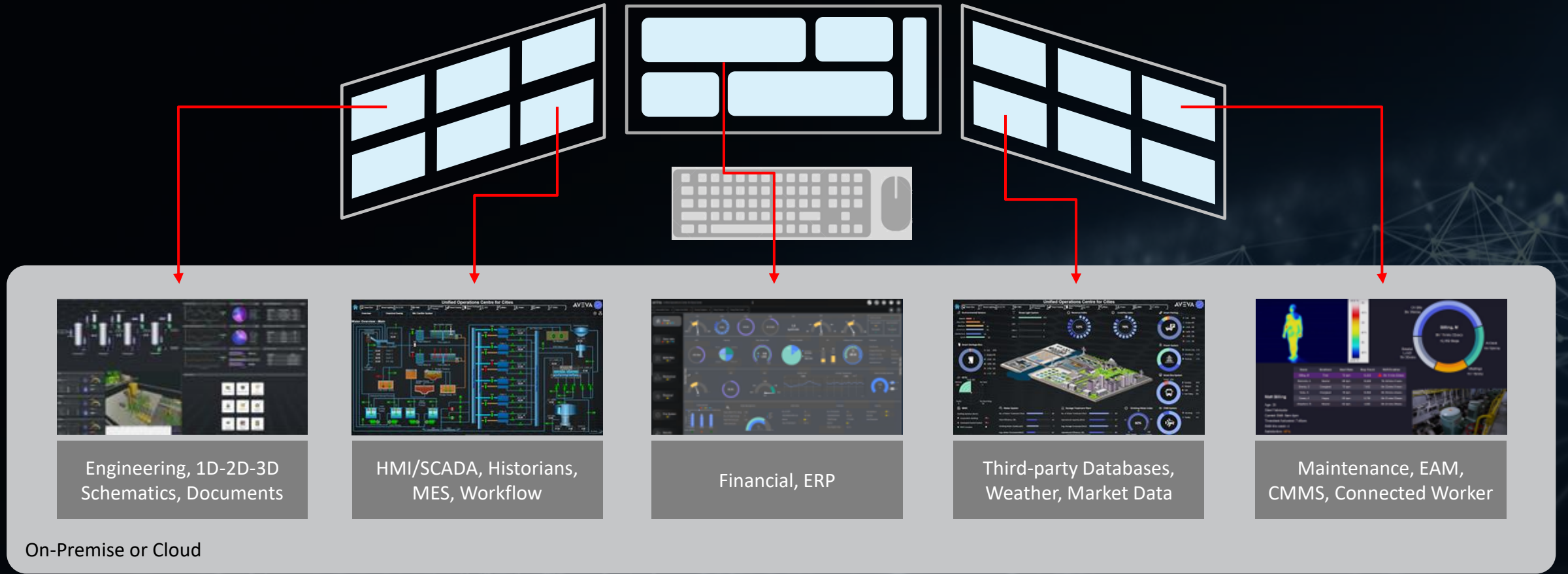
How can I provide **safety** and meet **regulatory norms**?

How can I **enable better decision making**?

How can I **improve operational efficiency**?

How can I **provide a better experience to my customers**?

# “System of systems” approach



Ensure Compliance

Maintain Uptime

Mitigate Costs

Manage Complexity

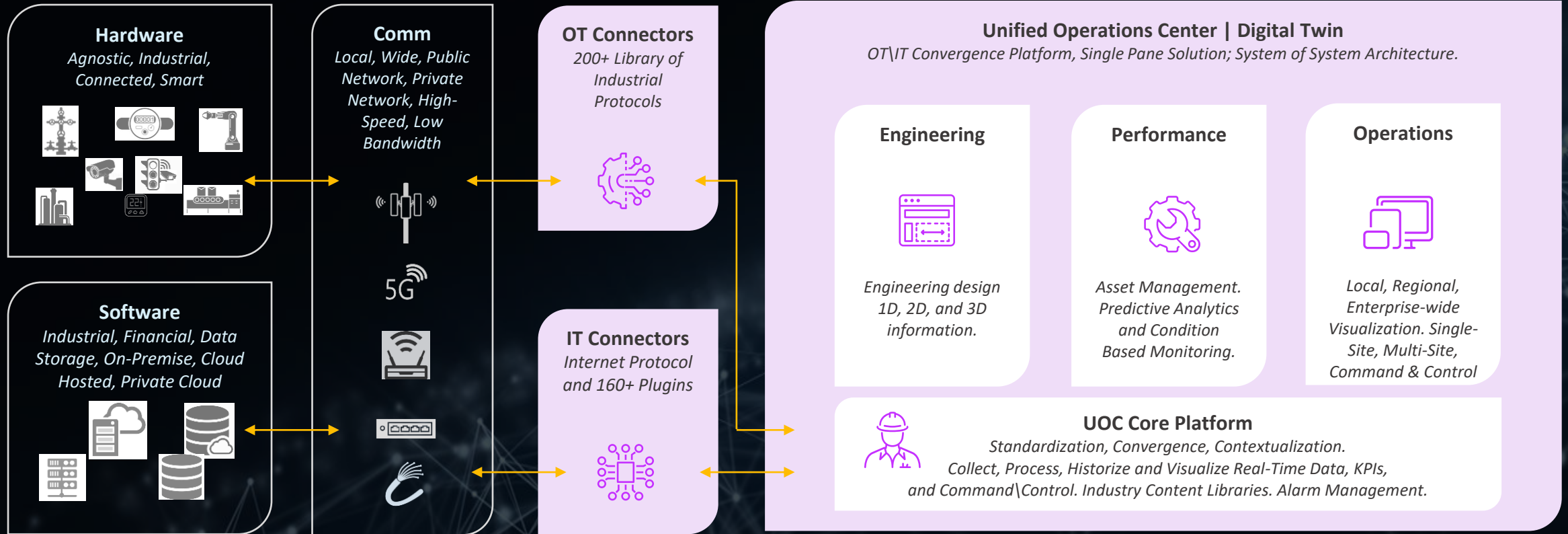
**AVEVA**

Life Is On

**Schneider Electric**



# “System of systems” approach



# Unified Operations Center | Differentiated

## ACTIONABLE

Only AVEVA is a combination of back office, front office, and operations. We don't only show data, but what to do with it, too



## EFFECTIVE

Seamlessly integrates with all operational systems to deliver faster, better, more efficient decision making

## CONTEXT

Context driven approach. Converge data from multiple operations and business data silos. Stakeholder and Operations monitoring and control data in context.



## FLEXIBLE

Flexible in architecture, technology, and commercial model

## UNIVERSAL

Only AVEVA is so comprehensive we can pick you up at any point on your digitalization journey and take you anywhere you want to go



## COMPATIBLE

No need to rip and replace thanks to vendor-agnostic technology

## AGNOSTIC

Only AVEVA is vendor agnostic. Our systems integrate with all major tools, tech providers, and incumbent players alike



## COLLABORATIVE

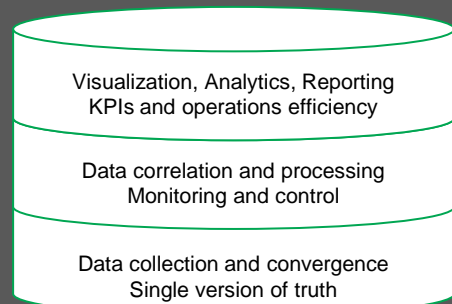
Full visibility of data, no more silos, everyone working together on a single version of the truth



# Base ways to organize UOC

## UOC without new space/construction

Due to distributed sites/operations, and new way of remote working, UOC can be organized step-by-step, by enabling new tools and functionality from existing and added workstations, as well as from mobile access points via dashboards and consoles of following critical layers:



1. Stakeholders/Top management
2. Operational management
3. Operators
4. Experts/Specialists
5. Central Video-wall or panels

## New UOC construction

Traditional way to organize UOC for greenfields, or big vertical corporations driving digital transformation. Usually it is newly designed high-tech open space, which integrates all layers of workstations/dashboards, central video-wall, training and collaboration space.



# ADNOC

## The Panorama Project

*“The Panorama Digital Command Centre demonstrates how ADNOC is utilizing cutting-edge technology to find new ways to optimize our assets, unlock value and drive efficiencies across the company. It provides a single access point to critical operational and performance information, facilitating smarter and faster decision-making and better enabling us to uncover new solutions.”*

*H.E. Dr Sultan Al Jaber, ADNOC Group CEO*

### Results

- Command Center integrates around 120,000 tags and aiming for more than 2 million Tags
- Panorama provides access information from one central location, enabling a “single version of the truth” via dashboards viewable from Pods and the 50 x 3m video wall centerpiece
- “Systematic Anticipation” a standardized, automated way of managing the business by looking at current and near future operations requirements, planned and actual performance
- Next: predictive analytics, decision automation and AI





An aerial photograph of a lush green landscape. A river winds through the center, curving around a small island. In the middle of the island, there is a circular green, likely a golf course green. The surrounding area is covered in dense, vibrant green trees and vegetation. The lighting is soft, suggesting a misty or overcast day.

**Our mission is to be your digital partner  
in Sustainability and Efficiency**

Life Is On



**Schneider**  
Electric